



四維航業股份有限公司
SHIH WEI NAVIGATION CO., LTD.

2022年法人說明會
Investor Relationship Presentation

TWSE 5608
13 Dec 2022

免責條款

- 一. 對於經由本簡報內連結之其他網站而取得之資訊或建議，不擔保其為完全正確無誤。四維航業股份有限公司對於本簡報所提供之資訊或建議有權隨時修改或刪除的權利。
- 二. 若因任何資料之不正确或疏漏所衍生之損害或損失，四維航業股份有限公司將不負法律責任。是否經由本簡報使用下載或取得任何資料，應由您自行考量且自負風險，因任何資料之下載而導致您電腦系統之任何損壞或資料流失，您應負完全責任。
- 三. 本簡報所用的資料、商標、標誌、圖像、短片、聲音檔案、連結及其他資料等（以下簡稱「資料」），只供參考之用。
- 四. 本簡報所使用之所有內容，包括但不限於著作、圖片、資訊、資料，均由四維航業股份有限公司或其他權利人擁有其智慧財產權。任何人不得逕自使用、修改、重製、公開播送、改作、散布、發行、公開發表、進行還原工程、解編或反向組譯。若您欲引用或轉載前述內容，必須依法先取得四維航業股份有限公司或其他權利人之事前書面同意，並請註明資料來源同時確保資料之完整性，不得任意增刪。尊重智慧財產權是您應盡的義務。

1. There is no guarantee that the information or suggestions obtained through other websites linked in this newsletter are completely correct. Shih Wei Navigation Co., Ltd. has the right to modify or delete the information or suggestions provided in this newsletter at any time.
2. Shih Wei Navigation Co., Ltd. will not be liable for any damages or losses resulting from incorrect or omission of any information. Whether to download or obtain any information through the use of this presentation is your own consideration and at your own risk. Any damage to your computer system or loss of data caused by the download of any information should be fully responsible for you.
3. The materials, trademarks, logos, images, short videos, sound files, links and other materials used in this presentation (hereinafter referred to as "data") are for reference only.
4. All content used in this newsletter, including but not limited to, works, pictures, information, and materials, is owned by Shih Wei Navigation Co., Ltd. or other rights holders. No one is allowed to use, modify, reproduce, publicly broadcast, modify, distribute, distribute, publicly publish, perform restoration engineering, decompilation, or reverse assembly. If you want to quote or reprint the foregoing content, you must obtain the prior written consent of Shih Wei Navigation Co., Ltd. or other right holders in accordance with the law, and please indicate the source of the information and ensure the integrity of the information, and no additions or deletions are allowed. Respecting intellectual property rights is your obligation.

議程 Agenda



- 一、公司概況 / Business Overview
- 二、產業概況 / Industry Overview
- 三、永續經營 / ESG
- 四、營運策略 / Strategy and Prospect
- 五、Q&A



一、公司概况 Business Overview



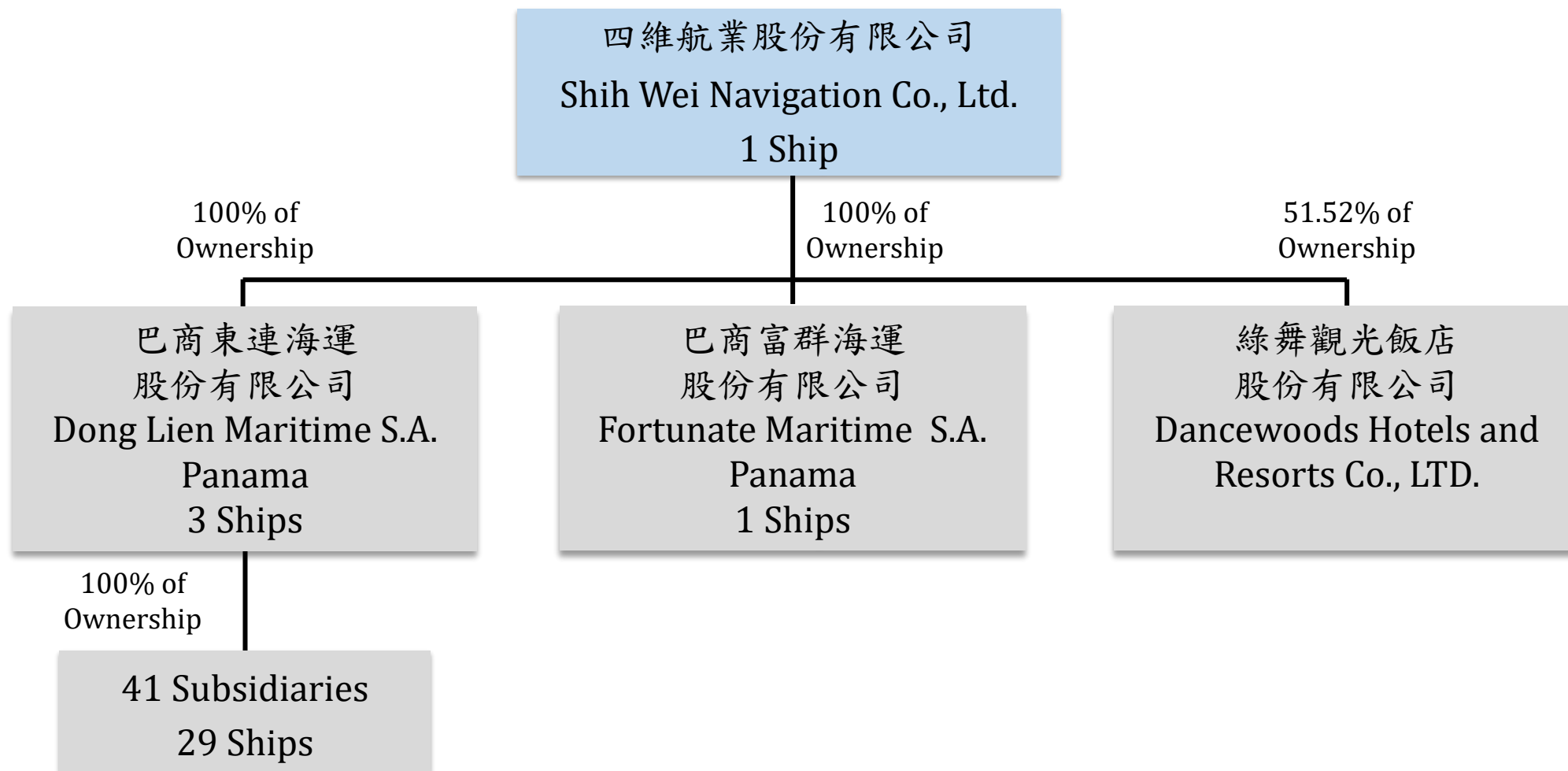
四維航業股份有限公司係74年3月設立，所營業務主要為船舶運送、船務代理、船舶租賃及買賣等服務。本公司於90年7月經財團法人中華民國證券櫃檯買賣中心核准股票上櫃，其後於92年8月經台灣證券交易所核准股票上市。

本公司總經理藍心琪小姐已於109年10月份自創辦人藍俊德先生手中接任董座。藍心琪除已有逾二十年之海運本業學經歷，現亦於國立臺灣大學攻讀高階經理人在職專班，有望能以新想法帶動並領導新方向。

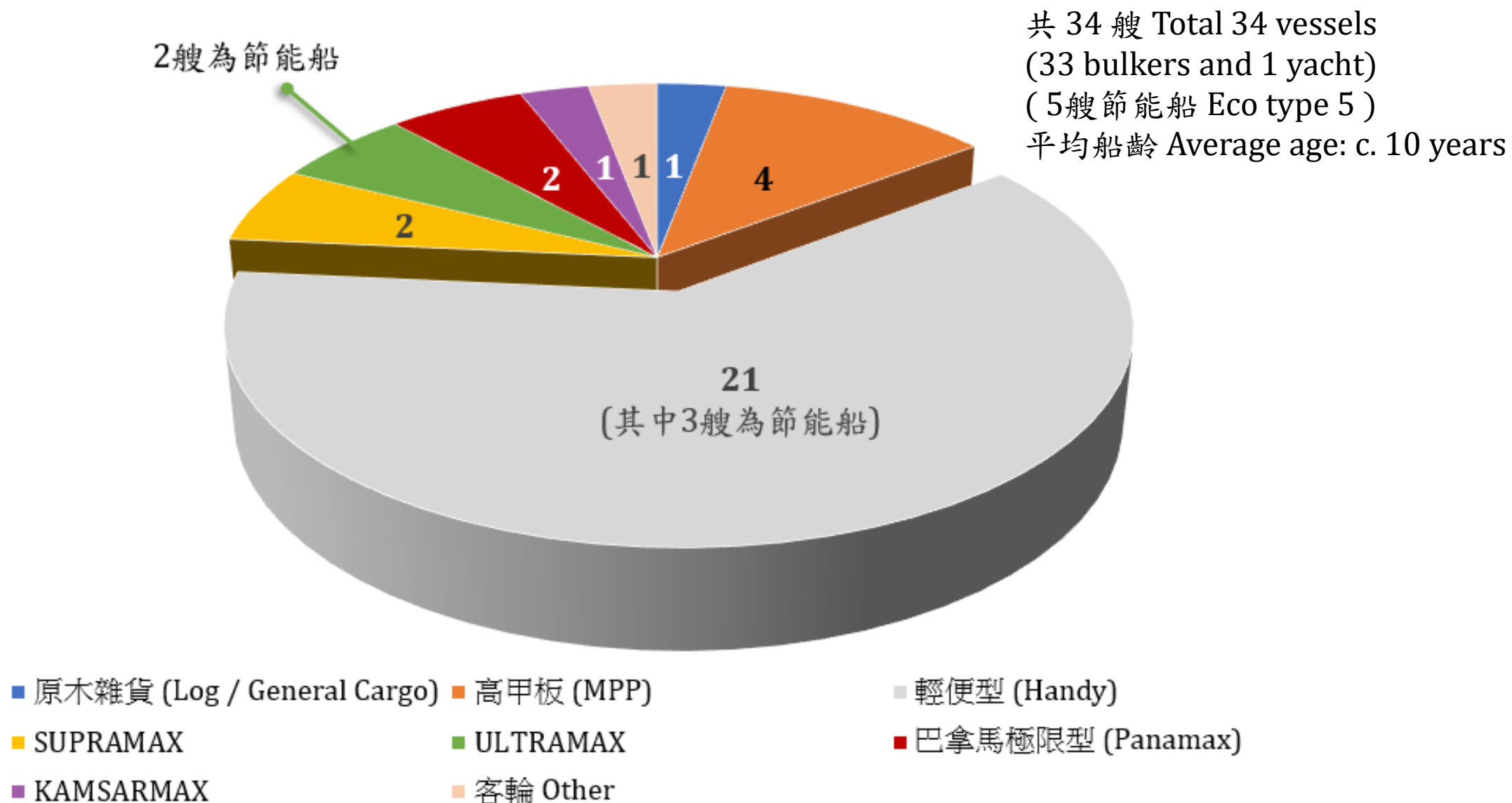
Shih Wei Navigation Co., Ltd. was incorporated in Taiwan in March, 1985. The Corporation mainly provides services for seaborne bulk cargo, shipping agencies as well as chartering, selling and purchasing ships. The Corporation was permitted to trade its shares on the Taipei Exchange Market in July, 2001 and has been listed on the Taiwan Stock Exchange Market since August, 2003.

The Corporation was founded by Mr. JD Lan and his daughter Ms. Shin-Chyi, Irene, Lan has taken over the Chair since October, 2020. Irene has over 20 years' experience in shipping and is currently studying EMBA Programme at NTU. It's anticipated that she will take the helm with new ideas and aspects.

關係企業組織圖 Organization Chart

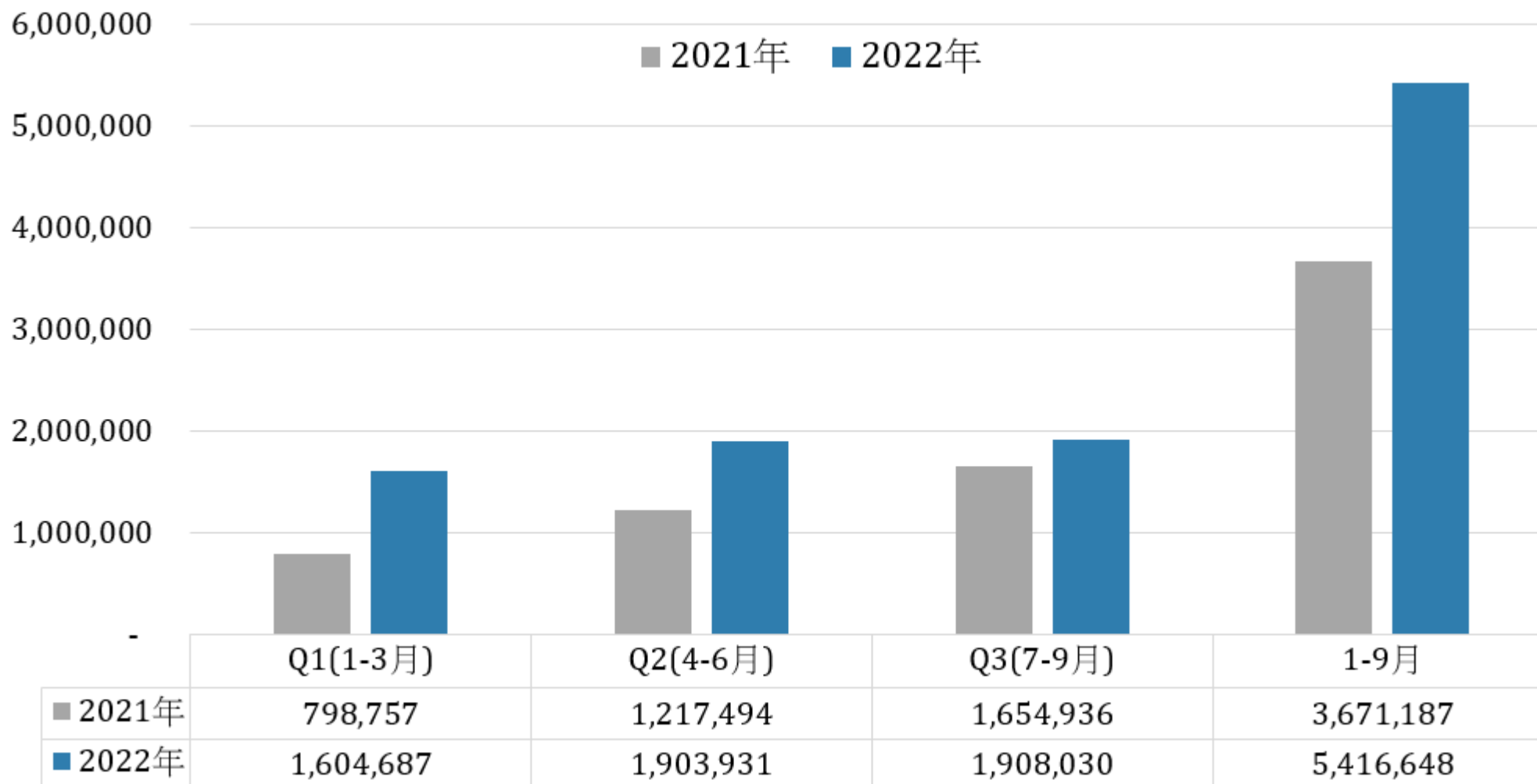


現有船隊 Existing Vessels



2021與2022年合併營業收入

Consolidated Operating Revenue in 2021-2022



單位：新台幣 仟元
(Unit: NTD'000)

2022年1-9月合併綜合損益表

Consolidated Statement of Comprehensive Income in Jan-Sep, 2022

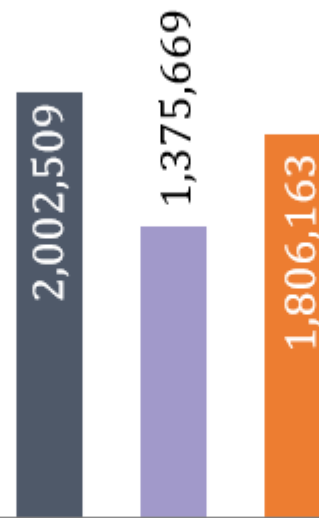
■ 2021
■ 2021 Jan-Sep
■ 2022 Jan-Sep

單位：新台幣 仟元
(Unit: NTD'000)

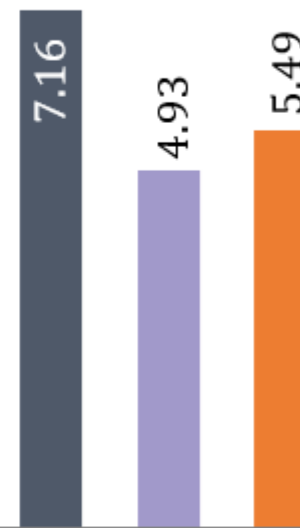
營業淨利
Operating Income



淨利歸屬於本公司業主
Net Income Attributable To
Owners of the Corporation



每股盈餘(新台幣 元)
EPS (NTD)





二、產業概況

Industry Overview



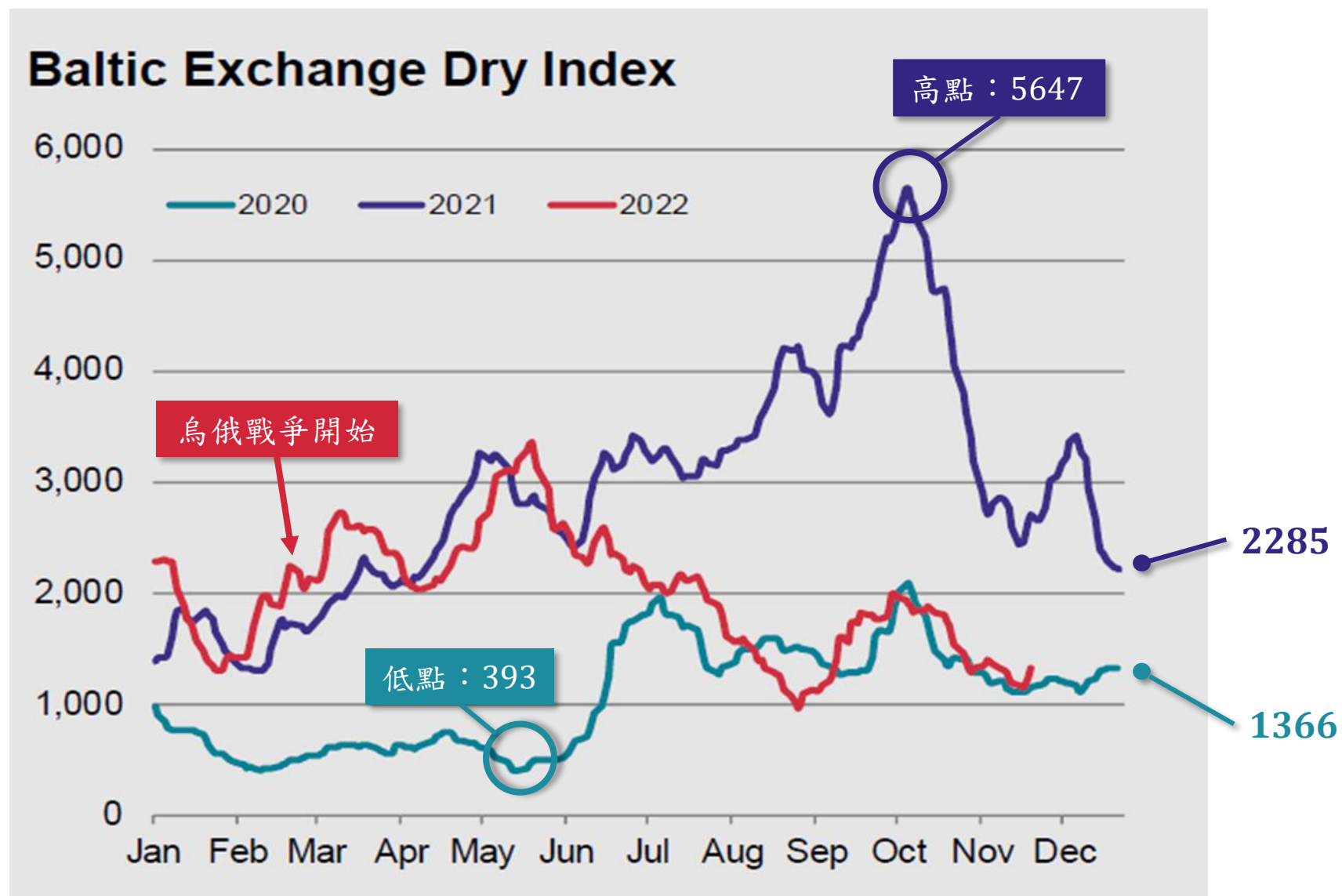
WORLD ECONOMIC OUTLOOK OCTOBER 2022

GROWTH PROJECTIONS BY REGION

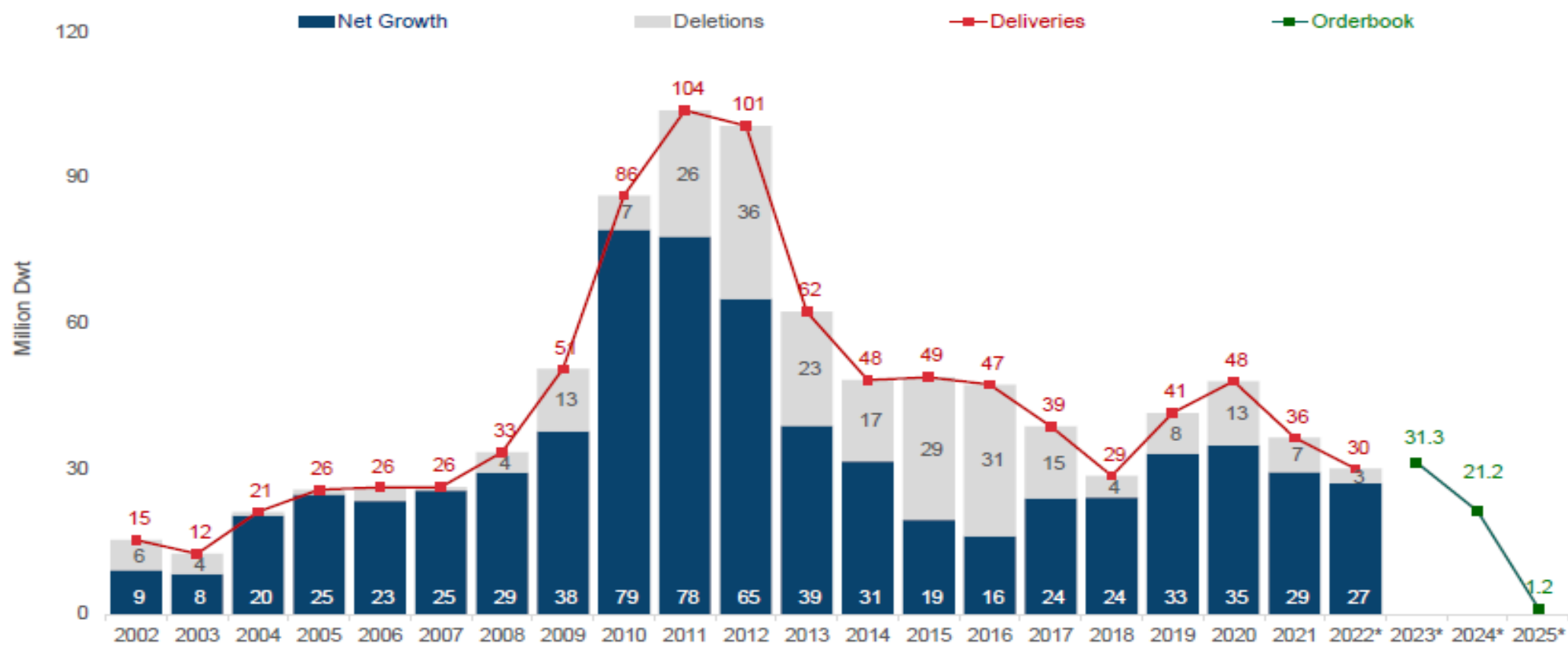
(PERCENT CHANGE)



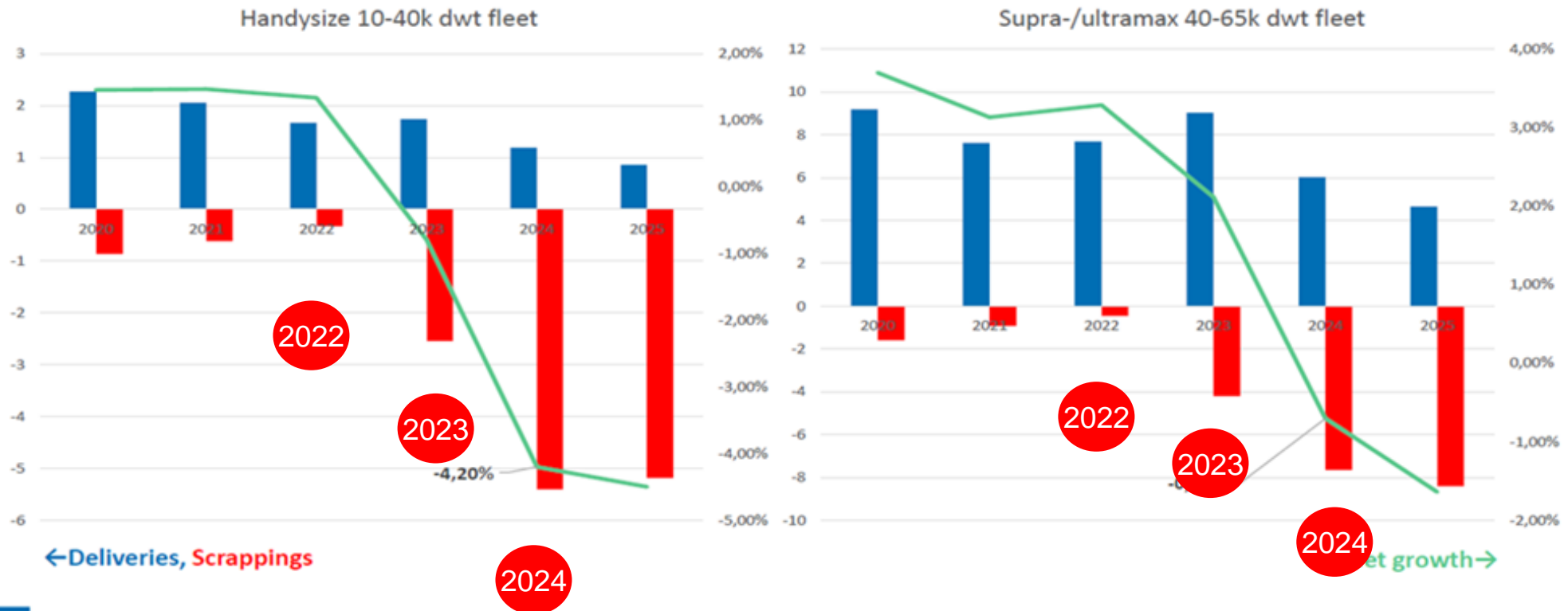
BDI指數



Annual Fleet Net Growth



Handysize face more aggressive contraction, while supra/ultra see a softer fleet reduction



平均船齡 Average Age of the Dry Bulk Fleet

	2009	2010	2011	2012	2013	2014	2015	2016	2017	2018	2019	2020	2021	2022ytd
VLOC	13.1	12.9	11.9	10.3	9.5	9.7	10.1	10.3	10.0	9.6	8.9	6.8	7.1	7.6
Capesize	10.8	9.9	8.4	7.5	7.6	7.8	7.7	7.3	7.8	8.5	8.9	9.3	9.8	10.2
P-Pmx	9.3	7.8	5.9	5.1	5.3	5.7	6.3	6.7	7.4	7.9	8.7	9.2	9.6	9.9
Pmx	12.8	13.2	11.8	10.3	9.6	9.4	9.4	9.2	9.5	10.2	10.5	10.8	11.4	11.7
Smx	11.3	10.9	10.1	8.8	8.5	8.5	8.5	8.5	8.8	9.4	10.0	9.7	10.3	10.8
Hdysize	19.9	18.1	16.0	14.1	13.0	12.4	12.1	11.9	12.1	12.5	13.0	12.5	13.0	12.9

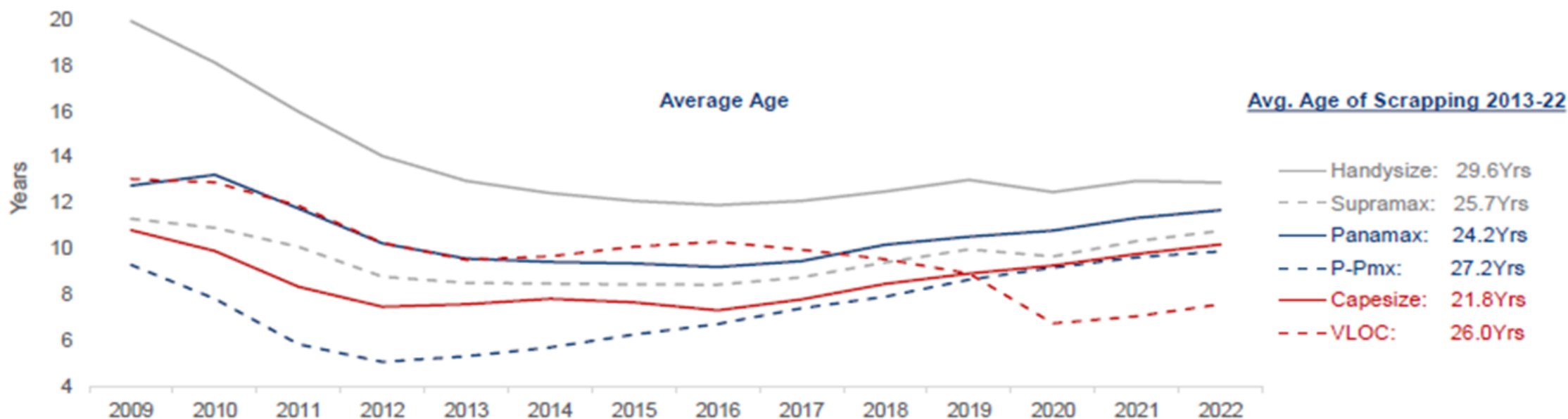
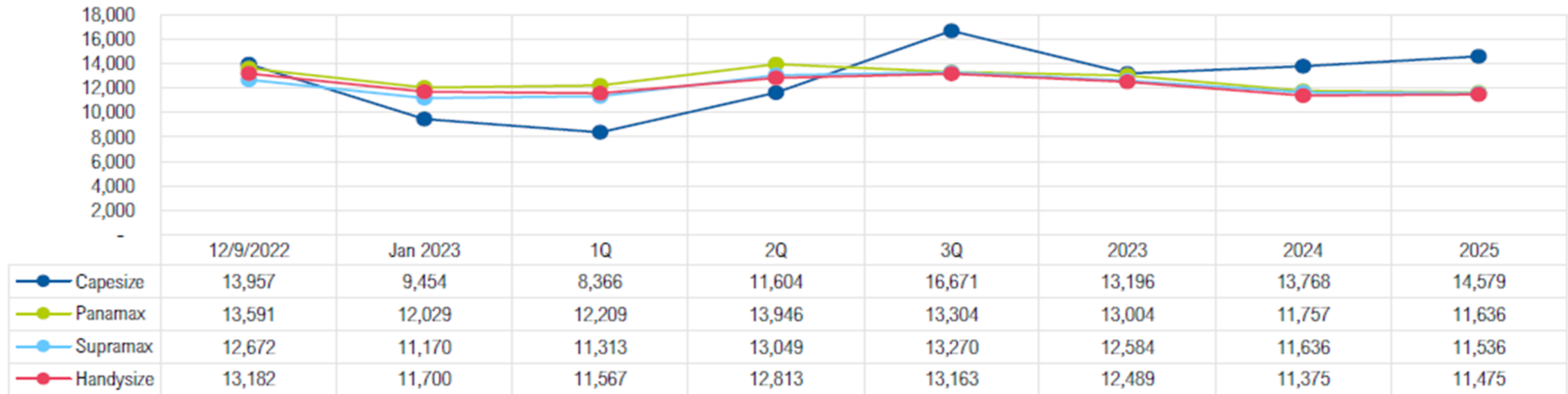


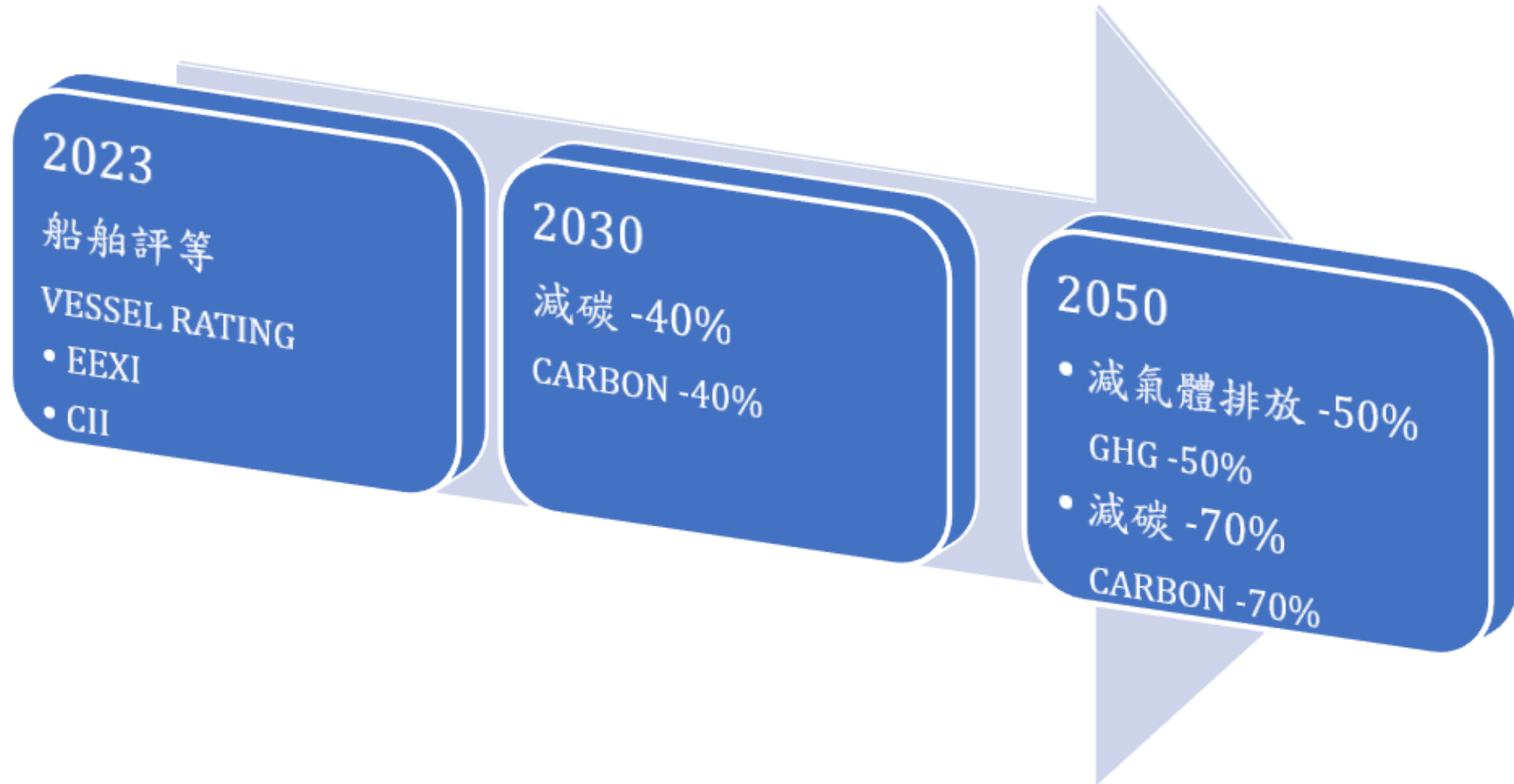
Table 1.10 International maritime trade developments forecasts, 2022–2027 (annual percentage change)			
	Annual Growth	Years	Seaborne trade flows
UNCTAD	1.4	2022	Total seaborne trade
	1.4	2023	
	2.2	2024	
	2.3	2025	
	2.3	2026	
	2.2	2027	

Baltic Exchange Forward Freight Agreements (8 Dec)



航運業佔全球溫室氣體排放總量約 **3%**

The shipping industry account for 3% of global GHG emissions.



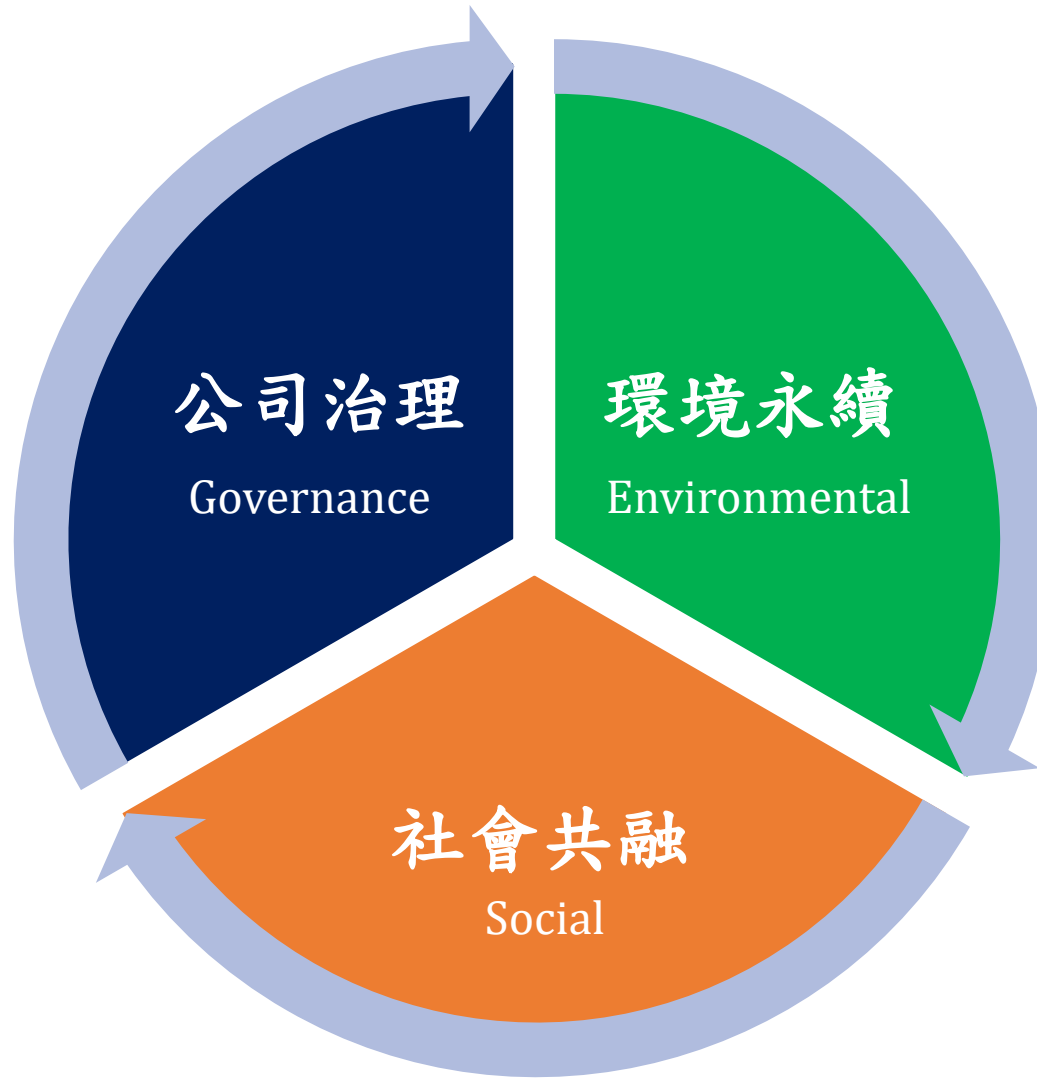
三、永續經營 ESG



四維航業ESG SHIH WEI's ESG

遵循法規，提升資訊品質 Follow regulations and improve information quality

- 超前法規要求，提早兩年出版永續報告書自主揭露非財務資訊
- Ahead of regulatory requirements, voluntary publication of sustainability reports
- 依循GRI、TCFD、SASB產業標準編製永續報告書
- Prepare sustainability reports in accordance with GRI, TCFD, and SASB industry standards



環境永續，你我有責 Environmental sustainability, We are all responsible

- 超前法規要求，自主盤點溫室氣體排放
- Ahead of regulatory requirements, self-inspection of GHG

善盡企業社會責任 Practice corporate social responsibility

- 重視職場健康安全
- Emphasis on workplace health and safety
- 認養屏東霧台原鄉學童
- Adoption of "Secret Base for Children from Wutai, Pingtung"
- 海上救助行動
- Maritime search and rescue

認養「屏東霧台原鄉孩子的秘密基地」

Adoption of "Secret Base for Children from Wutai, Pingtung"

共善共好，陪伴偏鄉弱勢孩童學習與成長

To be kind to each other, and to accompany disadvantaged children in remote areas to learn and grow.

現況 situation

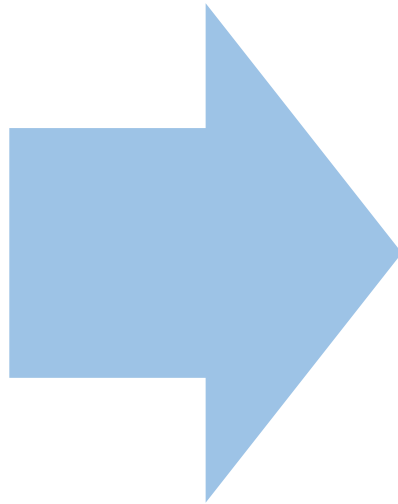
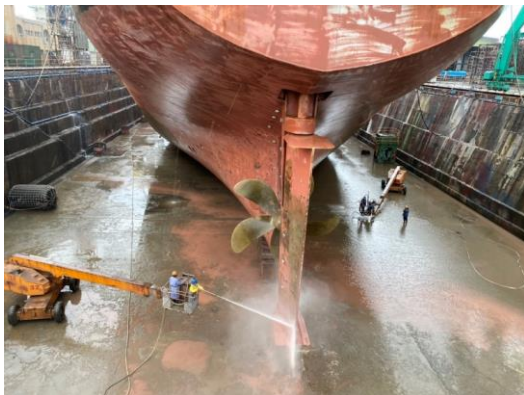
- 服務霧台國小約22位學童。
- Serving about 22 students from Wutai Elementary School
- 除了課業輔導之外，也教導品格教育、藝術、魯凱文化及閱讀.....等課程。
- In addition to academic tutoring, he teaches character education, art, Rukai culture, reading...etc.



創造台灣經濟產值，善盡企業責任 Create Taiwan's Economic Value and Practice CSR

自2021年10月起，經歷重重難關，榮維輪成功進入台船船塢進行塢修，並於2022年2月完成。
Since October 2021, after experiencing many difficulties, the MODEST SW has successfully entered the CSBC Corp. for docking repairs, which was completed in February 2022.

為台灣於疫情期間國內首艘外籍商船來台修繕案。
It was the first foreign merchant ship in Taiwan to come to Taiwan for repairs during the epidemic.





四、營運策略

Strategy and Prospect



1. 強化財務結構

Strengthening of Financial Structure

2. 持續處分舊船及投資新船

Disposal of Aged Vessel(s) and Evaluation of Modern Ship Types



四維航業股份有限公司
SHIH WEI NAVIGATION CO., LTD.

投資人聯絡窗口

發言人：許網倫先生

investor@swnav.com.tw

+886(0)2-8712-1888